



Parts List for #578173 Deluxe Grinder Stand

Assemble the stand using the drawing at right as reference.

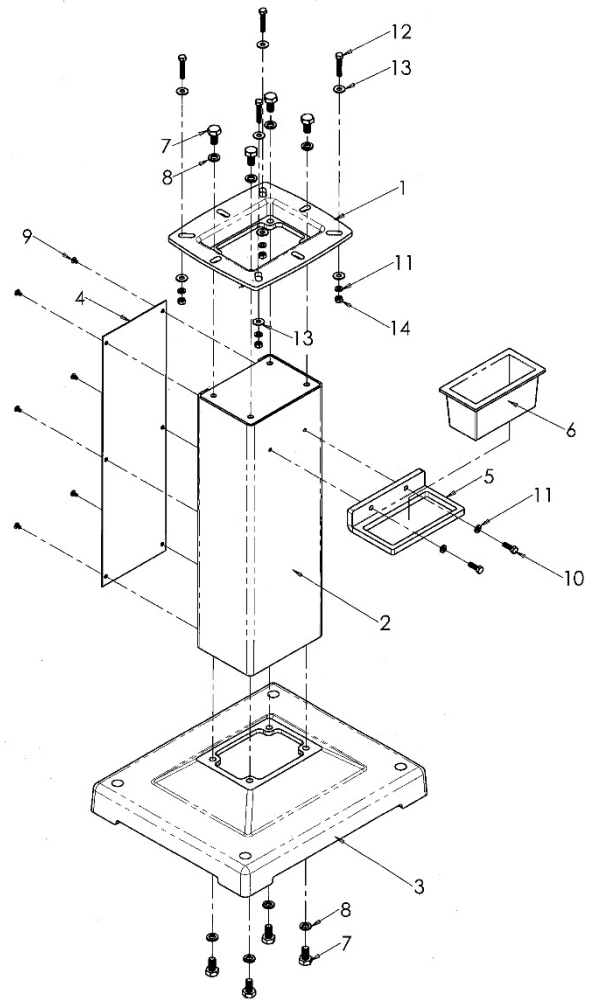
Tools required for assembly:

Screwdriver, flat or cross-point

Wrenches: 5/16", 1/2" and 3/4"

1. Install post (#2) onto base (3). Secure with four socket head cap screws and washers (7/8).
2. Install water pot frame (5) with screws and washers (10/11).
3. Place water pot (6) into frame (5).
4. Install platform (1) onto post (2) with four screws and washers (7/8).
5. Install cover plate (4) with screws (9).
6. Mount grinder to platform using fasteners (11-14).

Operation: Fill water pot (6) with water. Dip workpiece into the water to cool it after grinding. Do not apply water directly to the grinding wheels.



Index	Part No.	Description	Qty.
1	DBGS-01	Platform	1
2	DBGS-02	Post	1
3	DBGS-03	Base	1
4	DBGS-04	Cover Plate	1
5	DBGS-05	Water Pot Frame	1
6	IBGS-06	Water Pot	1
7	TS-0070011	Hex Cap Screw, 1/2-13x1	8
8	TS-0720111	Lock Washer, 1/2	8
9	TS-0813022	Pan Head Machine Screw 1/4-20x3/8	6
10	TS-0051051	Hex Cap Screw, 5/16-18x1	2
11	TS-0720081	Lock Washer, 5/16	6
12	TS-1490071	Hex Cap Screw, M8x40	4
13	TS-2361081	Lock Washer, M8	8
14	TS-1540061	Hex Nut, M8	4

Specifications

Stock number578173

Assembled size (in.) 20"L x 17"W x 33"H

Packing size (in.)28-1/8"L x 17-3/4"W x 12-1/4"H

Net weight (lbs)108

Shipping weight (lbs)116

Specifications were current at time of publication, but because of our policy of continuous improvement, JET reserves the right to change specifications at any time and without prior notice, without incurring obligations.

JET

427 New Sanford Road
LaVergne, Tennessee 37086
Ph.: 800-274-6848
www.jettools.com

Part No. M-578173

Revision A1 05/2015

Copyright © 2015 JET, a Division of JPW Industries, Inc.